

**CHIORINO**<sup>®</sup>  
1906

*Passion for belting*

**Your partner  
for food safety**

HACCP conveyor  
and process belts



**Meat & Poultry**

# HACCP conveyor and process belts for meat & poultry



CHIORINO manufactures conveyor and process belts that fully comply with the latest European and international Food Regulations, and are particularly recommended for the **HACCP system**.

The wide range of CHIORINO food belts is developed to satisfy all demanding applications in meat & poultry, assuring the **highest safety and hygiene**.



## Certified Food Compliance

To protect Consumer's health, CHIORINO process and conveyor belts comply with the latest European and international Food Regulations:

**REGULATION EC 1935/2004** and amendments

**REGULATION EC 2023/2006** and amendments

**REGULATION EU 10/2011** and amendments

**FDA (Food and Drug Administration)**

**REGULATION NSF/ANSI 3-A 14159-3-2014** and amendments

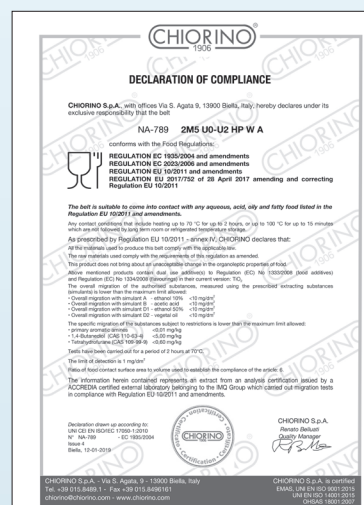
**USDA (United States Department of Agriculture)**

**HALAL (World Halal Authority)**

The careful selection of raw materials, the constant adjustment by R&D Department to the legislative developments in food safety, the strict controls throughout the production process (Good Manufacturing Practices) guarantee total food compliance of CHIORINO belts.

Declarations of compliance as prescribed by law are available for every CHIORINO food belt.

Thus, the Customers are certain to use materials that fully comply with the HACCP system.



# Leading brand for hygiene and food safety



The HP® conveyor and process belts are the benchmark in the food industry as far as **hygiene, performance** and **working life** are concerned.

The HP® belts fully support all the **HACCP procedures** through the whole food manufacturing process.

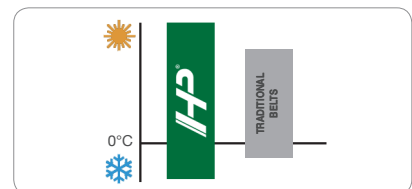


## + BENEFITS

- **Total respect of the HACCP system**
- **Non staining**
- **Easy to clean**
- **Time, water and energy saving**
- **Long service life**

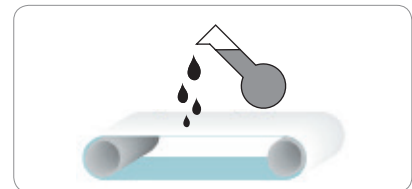
## Resistance to high/low temperatures

The HP® belts offer increased resistance to high temperatures compared to traditional polyurethane belts and maintain their characteristics even at lowest temperatures.



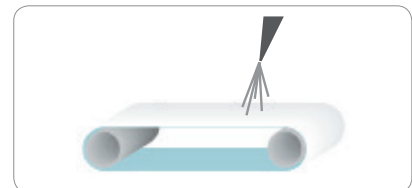
## Resistance to oils and chemical agents

The HP® belts ensure an excellent resistance to the chemical agents, fats and aggressive oils, including sunflower, palm and coconut oil.



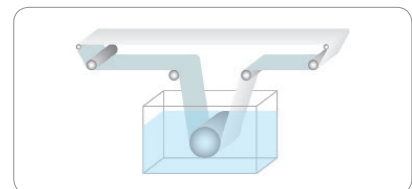
## Resistance to hydrolysis

The HP® belts guarantee an excellent resistance to hydrolysis as well as the chemical and mechanical action of washing with hot water and steam, including in continuous systems.



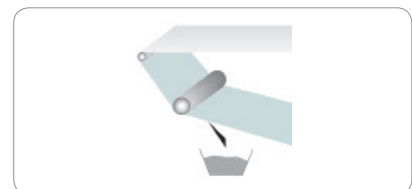
## Clean-in-place

HP® belts can be subjected to continuous washing systems with hot water and detergents without undergoing any deterioration.



## Superior flexibility and mechanical resistance

The HP® belts offer a superior flexibility and are extremely resistant to abrasion and mechanical stress caused by knife edges, backflexing and scrapers.



# Ultimate positive drive belt

---



HP COMPACT® is a homogeneous conveyor and process belts - smooth or positive drive - assuring **total hygiene** and designed to resist the most severe **cleaning procedures**.

It goes beyond the application limits of both modular and monolithic belts, reinforced or not, commonly found in the market.



## + BENEFITS

- Total food safety
- Superior resistance to washing and sanitizing
- Excellent resistance to fats and oils
- Self-tracking
- Optimized cost of ownership

# Accuracy and precision

---



HP COMPACT MINI DRIVE® is the ultimate solution for **food positive drive** belts featuring a **reduced teeth pitch**.

Ideal for running on small pulleys, it assures **smooth product transfer** and **increased production efficiency**.



## + BENEFITS

- Accurate product transfer
- No mistracking. No misalignments
- Suitable for bi-directional running
- Ideal for high speed
- Optimized cost of ownership

# Detectable solutions for contamination-free food

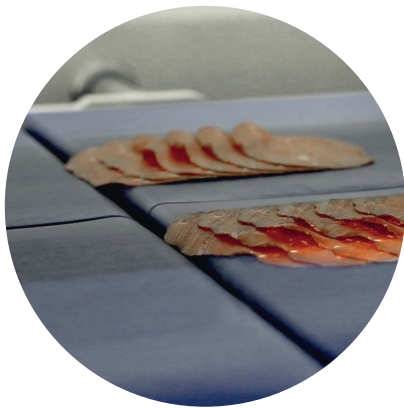
---



Chiorino DET™ is a full range of **food grade metal detectable** products.

The exclusive DET™ TPU belt is **recognized** in very **small particles** by the metal detectors used in food processing and packaging.

Chiorino DET™ line guarantees a **safest food production** and **prevents products recalls**.



## + BENEFITS

- **Guaranteed food safety**

---

- **No food contamination**

---

- **Waste reduction**

---

- **Prevents product recalls**

---

- **Long service life**

---

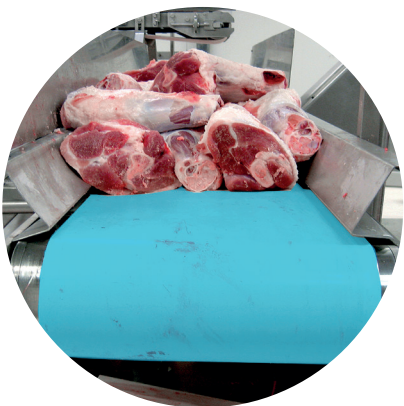
# Heavy duty reliable thick belts

---



The Food Duty™ line of **high thickness polyurethane** belts has been designed to overcome the **limits** of the current **PVC belts** for heavy-duty applications in the food processing industry.

The polyurethane cover of Food Duty™ belts ensures **higher performances** and **greater hygiene** levels compared to PVC belts.



## + BENEFITS

- **Guaranteed food safety**

---

- **Highest resistance to fats and oils**

---

- **Excellent reliability**

---

- **Reduced maintenance costs**

---

- **Long service life**

---

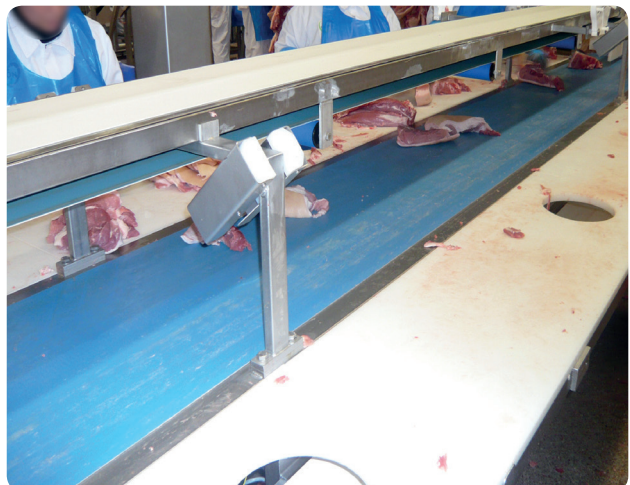
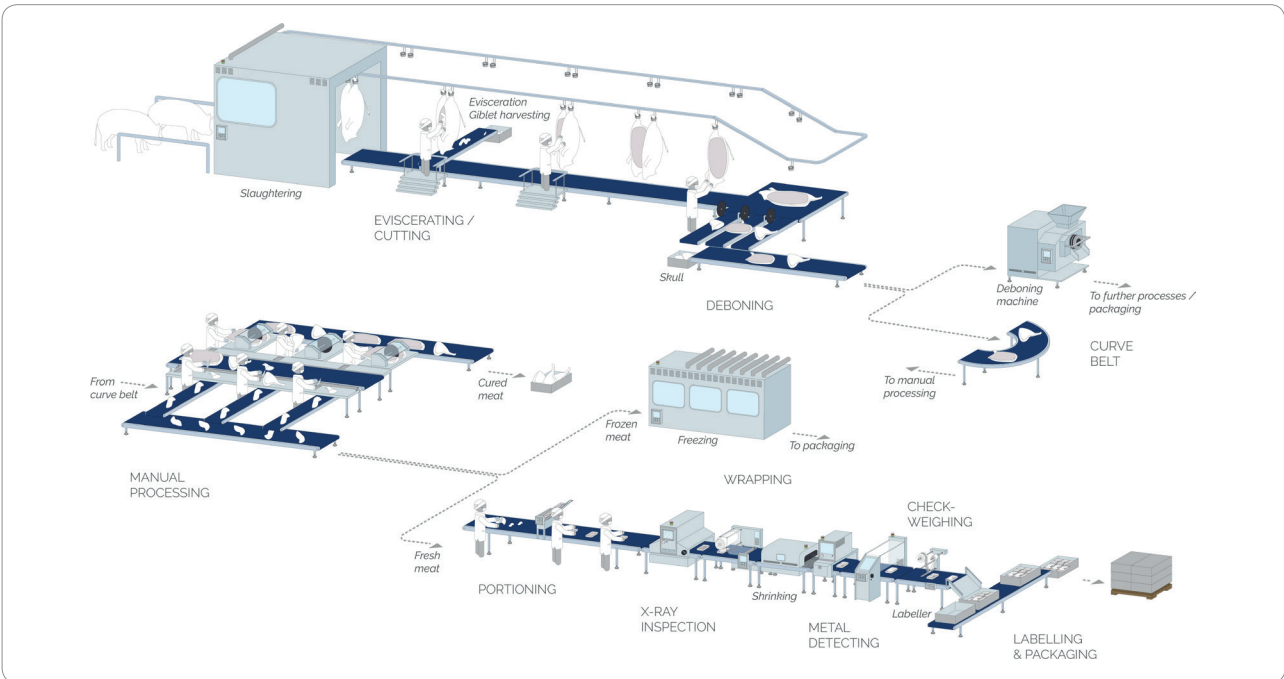
# Meat



## KEY FEATURES + BENEFITS

Excellent resistance to cut and abrasion	> <b>Highest reliability even with scrapers</b>
Superior resistance to aggressive fats	> <b>Resistance to ageing and long service life</b>
Superior sanitizing and cleaning resistance	> <b>Less bacteria proliferation</b>
Resistance to low temperatures	> <b>Long service life</b>

Industrial line for meat processing



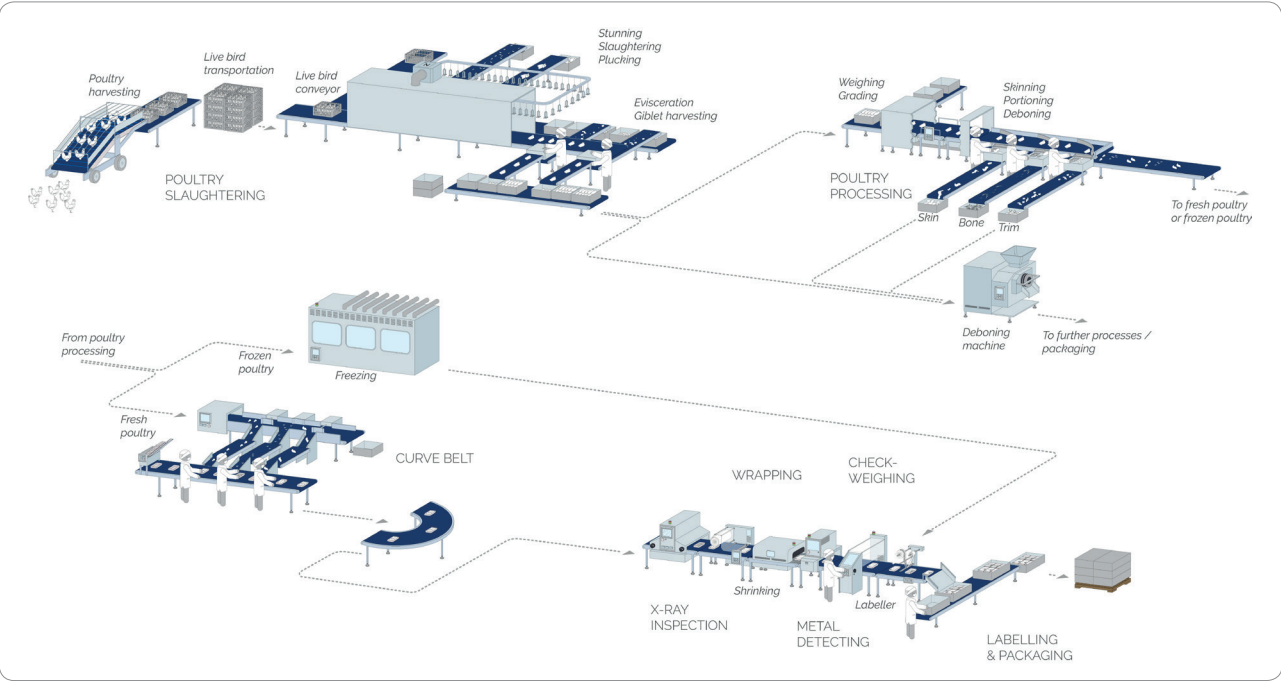
# Poultry



## KEY FEATURES + BENEFITS

Superior resistance to aggressive fats	>	<b>Resistance to ageing</b>
Superior sanitizing and cleaning resistance	>	<b>Total food safety</b>
Excellent resistance to sharp impacts and abrasion	>	<b>Highest reliability and less product waste</b>
Resistance to low temperatures	>	<b>Long service life</b>

### Industrial line for poultry processing



# Slicing



## KEY FEATURES + BENEFITS

Highest resistance to cleaning and sanitizing

> **Total hygiene and food safety**

Fray-free edges

> **Product safety and no contamination**

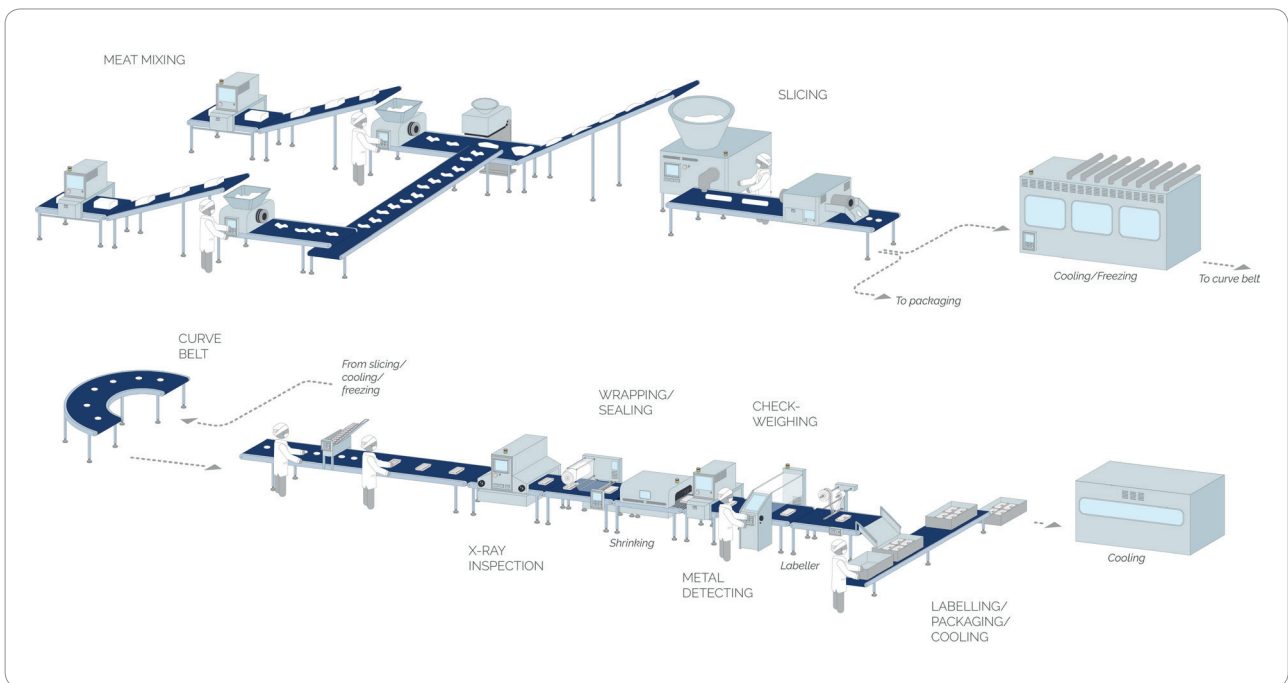
Suitable for high speeds

> **Perfect positioning  
Increased output**

Resistance to low temperature

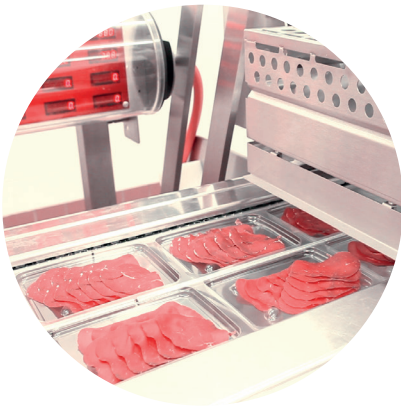
> **Long service life**

Industrial line for sausage / slicing processing





# Packaging



The wide range of Chiorino belts assures **safe and hygienic packaging** of meat & poultry products.

## **HP**® elastic belts

The **elastic HP® fibreless** and **highly resilient** food belts can be **easily fitted** on spreaders or electronic check-weighers.

**Total feeding precision**

**Quick and easy to fit and replace without tensioning devices**

**Fully HACCP compliant thanks to their extraordinary resistance to cleaning systems**

**Blue surface and a wide range of patterns**

## **MF**™ seamless belts

CHIORINO manufactures **truly endless** belts for vertical form-fill seal machines, with different coverings according to the type of packaging used.

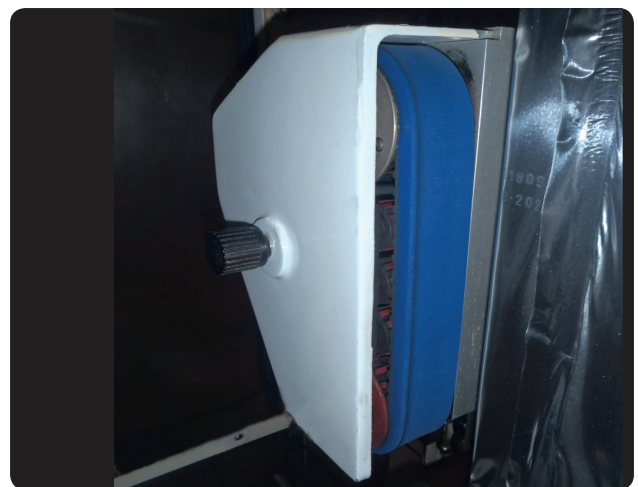
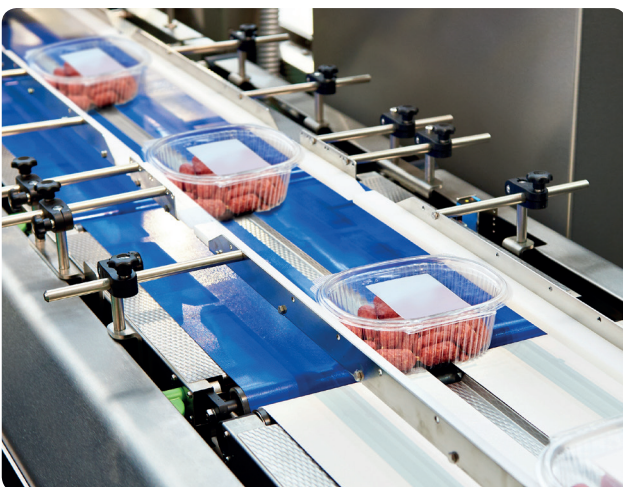
**Silicone blue:** food grade belts ideal for aseptic packagings

**HS W white:** both for PVC and polyethylene films and abrasive packagings (paper, fabric, etc.)

**R purple red:** both for PVC and polyethylene films and abrasive packagings (paper, fabric, etc.)

**B beige:** for very abrasive packagings.

Available with **special executions:** cunfersunks, punched holes, diagonal slots, groovings, application of polyurethane or rubber timing belts.



# Technical data

Code	Type	Conveying surface coating		Perm. antistatic	Total thickness	Knife edge min. radius <sup>1</sup>	Min. pulley diameter <sup>1</sup>	Pull for 1% elong. <sup>2</sup>	Max. admiss. pull	Temperature resistance °C		Coeff. of friction <sup>3</sup>
		Material	Colour							min.	max.	

## HP Premium line

NA-790	EL2-U10 HP W	TPU HP®	white		1.0	-	10	2	2	-30	60	MF
NA-785	EL2-U10 HP blue	TPU HP®	blue		1.0	-	10	2	2	-30	60	MF
NA-1089	EL3-U15 HP PN blue	TPU HP®	blue		1.5	-	10	3	3	-30	60	MF
NA-899	EL4-U20 HP blue	TPU HP®	blue		2.0	-	10	4	4	-30	60	MF
NA-948	1M5 U0-U2 HP W A	TPU HP®	white	•	0.7	3	6	5	5	-30	110	MF
NA-946	1M5 U0-U2 HP W S A	TPU HP®	white	•	0.7	3	6	5	5	-30	110	HF
NA-1052	1M5 U0-U2 HP blue S A	TPU HP®	blue	•	0.7	3	6	5	5	-30	110	HF
NA-947	1M5 U0-U2 HP VL blue A	TPU HP®	blue	•	0.7	3	6	5	5	-30	110	MF
NA-1191	1M5 U3-U3 HP FL/FM W	TPU HP®	white		1.4	-	10	5	5	-30	110	MF
NA-983	1T6 U0-U2 HP W A	TPU HP®	white	•	0.8	4	8	6	6	-30	110	MF
NA-789	2M5 U0-U2 HP W A	TPU HP®	white	•	1.3	4	8	6	12	-30	110	MF
NA-1067	2M5 U0-U2 HP blue A	TPU HP®	blue	•	1.3	4	8	6	12	-30	110	MF
NA-913	2M5 U0-U2 HP W S A	TPU HP®	white	•	1.3	4	8	6	12	-30	110	HF
NA-1054	2M5 U0-U2 HP blue S A	TPU HP®	blue	•	1.3	4	8	6	12	-30	110	HF
NA-1410	2M5 U0-U2 HP VL blue	TPU HP®	blue		1.3	4	8	5	10	-30	110	MF
NA-786	2M5 U0-U2 HP VL blue A	TPU HP®	blue	•	1.3	4	8	6	12	-30	110	MF
NA-851	2M5 U2-U2 HP VL blue A	TPU HP®	blue	•	1.5	-	10	6	12	-30	110	MF
NA-1193	2M5 U0-U7 HP LG blue S A	TPU HP®	blue	•	1.8	-	10	6	12	-30	110	HF
NA-1130	2M5 U0-U8 HP CC blue	TPU HP®	white	•	2.9	-	10	6	12	-30	110	HF
NA-1324	2M5 U0-U8 HP STL blue	TPU HP®	white	•	2.9	-	15	6	12	-30	110	HF
NA-1087	2M5 U0-U15 HP ST W A	TPU HP®	white	•	3.5	-	50	5	10	-30	110	MF
NA-992	2T12 U0-U2 HP VL W A	TPU HP®	white	•	1.6	6	12	12	24	-30	110	MF
NA-1020	3M8 U0-U5 HP W A	TPU HP®	white	•	2.3	-	60	10	20	-30	110	MF
NA-1083	3M8 U0-U5 HP blue A	TPU HP®	blue	•	2.3	-	60	10	20	-30	110	MF

## HP COMPACT® Homogeneous belts

NA-1366A	HP Compact 15 blue	TPU HP®	blue		1.5	-	25	5	10	-30	110	MF
NA-1359A	HP Compact 20 blue	TPU HP®	blue		2.0	-	50	8	16	-30	110	MF
NA-1207A	HP Compact 25 blue	TPU HP®	blue		2.5	-	50	8	16	-30	110	MF
NA-1294A	HP Compact 25 PN blue	TPU HP®	blue		2.5	-	50	8	16	-30	110	MF
NA-1328A	HP Compact 25 RG blue	TPU HP®	blue		2.5	-	50	8	16	-30	110	MF
NA-1328A RG	HP Compact RG 25 blue	TPU HP®	blue		2.5	-	50	8	16	-30	110	MF
NA-1257A	HP Compact 25 VL blue	TPU HP®	blue		2.5	-	50	8	16	-30	110	MF
NA-1307A	HP Compact 40 blue	TPU HP®	blue		4.0	-	80	15	30	-30	110	MF

## HP COMPACT® Positive drive homogeneous belts

Code	Type	Material	Colour	Total thickness	Pitch	Tooth section	Tooth length	Min. diameter <sup>1</sup>	Pull for 1% elong. N/mm	Temperature resistance	
										min. °C	max. °C
NA-1481F_D6	HP Compact Minidrive 15/20 A blue	TPU HP®	blue	1.5	20	6 x 4	72	20	10	-30	90
NA-1366F_D6	HP Compact Minidrive 15/20 blue	TPU HP®	blue	1.5	20	6 x 4	72	25	5	-30	90
NA-1359C_D13	HP Compact Drive 20/40 blue	TPU HP®	blue	2.0	40	13 x 8	72	80	8	-30	90
NA-1207C_D13	HP Compact Drive 25/40 blue	TPU HP®	blue	2.5	40	13 x 8	72	80	8	-30	90
NA-1294C_D13	HP Compact Drive 25/40 PN blue	TPU HP®	blue	2.5	40	13 x 8	72	80	8	-30	90
NA-1328C_D13	HP Compact Drive 25/40 RG blue	TPU HP®	blue	2.5	40	13 x 8	72	80	8	-30	90
NA-1257C_D13	HP Compact Drive 25/40 VL blue	TPU HP®	blue	2.5	40	13 x 8	72	80	8	-30	90
NA-1307C_D13	HP Compact Drive 40/40 blue	TPU HP®	blue	4.0	40	13 x 8	72	80	15	-30	90

## HP Round belts

Code	Type	Material	Colour	Surface	Hardness	Diameter	Min. pulley diameter	Pull for 8% elongation	Temperature resistance	
									Sh.A	mm
ES-603	RU-3 HP blue	TPU HP®	blue	smooth	85	3	20	15	-20	60
ES-604	RU-4 HP blue	TPU HP®	blue	smooth	85	4	35	26	-20	60
ES-605	RU-5 HP blue	TPU HP®	blue	smooth	85	5	45	42	-20	60
ES-606	RU-6 HP blue	TPU HP®	blue	smooth	85	6	50	60	-20	60
ES-607	RU-8 HP blue	TPU HP®	blue	smooth	85	8	70	110	-20	60
ES-719	RU-4 R HP blue	TPU HP®	blue	rough	85	4	35	26	-20	60
ES-720	RU-6 R HP blue	TPU HP®	blue	rough	85	6	50	60	-20	60

## XW-P X-wide belts

Code	Type	Conveying surface coating		Perm. antistatic	Total thickness	Knife edge min. radius <sup>1</sup>	Min. pulley diameter <sup>1</sup>	Pull for 1% elong. <sup>2</sup>	Max. admiss. pull	Temperature resistance °C		Coeff. of friction <sup>3</sup>
		Material	Colour							min.	max.	
NA-1447	1T6 U0-U2 W A XW-P	TPU	white	•	0.8	4	8	6	6	-30	110	MF
NA-1448	2M5 U0-U2 W A XW-P	TPU	white	•	1.3	4	8	6	12	-30	110	MF
NA-1426	2M5 U0-U2 blue A XW-P	TPU	blue	•	1.3	4	8	6	12	-30	110	MF

<sup>1</sup> Minimum radius / pulley diameter is dependent on the joint recommended by Chiorino.

<sup>2</sup> EL series: pull for 8% elongation.

<sup>3</sup> Conveying surface coefficient of friction: **LF** low, **MF** medium, **HF** high

Code	Type	Conveying surface coating		Perm. antistatic	Total thickness	Knife edge min. radius <sup>1</sup>	Min. pulley diameter <sup>1</sup>	Pull for 1% elong. <sup>2</sup>	Max. admiss. pull	Temperature resistance °C		Coeff. of friction <sup>3</sup>
		Material	Colour							min.	max.	

### Performance line

NA-945	1M5 U0-U2 W A	TPU	white	•	0.7	3	6	5	5	-20	100	LF
NA-549	2M5 U0-U1 W S A	TPU	white	•	1.3	4	8	6	12	-20	100	HF
NA-1069	2M5 U0-U1 blue S A	TPU	blue	•	1.3	4	8	6	12	-20	100	HF
NA-696	2M5 U0-U2 LF W A	TPU	white	•	1.3	4	8	6	12	-20	100	LF
NA-1290	2M6 U0-U2 GS W	TPU	white		1.3	6	12	6	12	-20	100	MF
NA-1451	2M6 U0-U2 GS DB	TPU	dark blue		1.3	6	12	6	12	-20	100	MF
NA-801	2M12 U0-U3 R W A	TPU	white	•	1.7	-	40	12	24	-20	100	LF
NA-887	2M12 U0-U10 W A	TPU	white	•	2.4	-	50	12	24	-20	100	LF
NA-241	2M12 V5-V-U10 W	TPU	white	•	3.5	-	80	12	24	-10	60	LF
NA-1010	2M12 U0-U15 LT W A	TPU	white	•	6.0	-	50	12	24	-20	100	MF

### FD Food Duty

NA-1325	2MT12 U0-U3 FD2.3	TPU	light blue		2.3	-	60	12	24	-10	80	MF
NA-1333	2T12 U0-U3 FD2.5	TPU	light blue		2.5	-	50	12	24	-10	80	MF
NA-1332	2T12 V5-U3 FD2.8	TPU	light blue		2.8	-	80	12	24	-10	80	MF

### DET Detectable belts

NA-1379	EL4-U20 blue DET	TPU	dark blue		2.0	-	10	4	4	-30	60	MF
NA-1323	EL6-U30 blue DET	TPU	dark blue		3.0	-	20	6	6	-30	60	MF
NA-1373	2M5 U0-U2 blue DET	TPU	dark blue	•	1.3	4	8	5	10	-30	100	MF
NA-1427	2M5 U0-U2 PN blue DET	TPU	dark blue	•	1.6	4	8	5	10	-30	100	MF
NA-1474	2MT5 U0-U2 blue DET	TPU	dark blue	•	1.4	4	8	5	10	-30	100	MF
NA-1374	2T12 U0-U2 blue DET	TPU	dark blue	•	1.6	-	25	12	24	-30	100	MF
NA-1406	3M8 U0-U5 blue DET	TPU	dark blue	•	2.3	-	60	8	16	-30	100	MF

### DET Detectable positive drive belts

Code	Type	Material	Colour	Total thickness	Pitch	Tooth section	Tooth length	Min. diameter <sup>1</sup>	Pull for 1% elongation	Temperature resistance	
										mm	mm
NA-1482F_D6	Compact Minidrive 15/20 A blue DET	TPU	dark blue	1.5	20	6 x 4	72	20	10	-30	90
NA-1461F_D6	Compact Minidrive 15/20 blue DET	TPU	dark blue	1.5	20	6 x 4	72	25	5	-30	90
NA-1460C_D13	Compact Drive 25/40 blue DET	TPU	dark blue	2.5	40	13 x 8	72	80	8	-30	90

### DET Detectable round belts

Code	Type	Material	Colour	Surface	Hardness	Diameter	Min. pulley diam.	Pull for 8% elong.	Temperature resistance	
									mm	mm
ES-790	RU-4 blue DET	TPU	dark blue	smooth	85	4	35	30	-20	60
ES-791	RU-6 blue DET	TPU	dark blue	smooth	85	6	50	70	-20	60
ES-792	RU-8 blue DET	TPU	dark blue	smooth	85	8	70	130	-20	60

### HP Transversal profiles and sidewalls

Code	Type	Dimensions b x h	Material	Hardness	Min. transversal pitch	Min. transversal diameter <sup>4</sup>		
							mm	Sh A / Sh D
ES-543	L20 U HP blue	10 x 20	TPU HP®	70 Sh A	40	40		
ES-546	L30 U HP blue	10 x 30	TPU HP®	70 Sh A	40	40		
ES-549	L40 U HP blue	10 x 40	TPU HP®	70 Sh A	40	40		
ES-535	L50 U HP blue	10 x 50	TPU HP®	70 Sh A	40	40		
ES-538	L80 U HP blue	10 x 80	TPU HP®	70 Sh A	40	40		
ES-731	L80 U HP blue 55D	10 x 80	TPU HP®	55 Sh D	40	40		
ES-563	T20 U HP blue	10 x 20	TPU HP®	70 Sh A	40	40		
ES-560	T30 U HP blue	10 x 30	TPU HP®	70 Sh A	40	40		
ES-557	T40 U HP blue	10 x 40	TPU HP®	70 Sh A	40	40		
ES-554	T50 U HP blue	10 x 50	TPU HP®	70 Sh A	40	40		
ES-534	T60 U HP blue	10 x 60	TPU HP®	70 Sh A	40	40		
ES-713	T50 U HP blue 55D	10 x 50	TPU HP®	55 Sh D	40	40		
ES-793	T100 U HP blue 55MD <sup>5</sup>	10 x 100	TPU HP®	55 Sh D	40	50		
ES-785	T120 U HP blue 55MD <sup>5</sup>	10 x 120	TPU HP®	55 Sh D	40	50		
ES-856	T80 U HP RG blue 55MD <sup>5</sup>	10 x 80	TPU HP®	55 Sh D	40	50		
ES-855	T100 U HP RG blue 55MD <sup>5</sup>	10 x 100	TPU HP®	55 Sh D	40	50		
ES-854	T120 U HP RG blue 55MD <sup>5</sup>	10 x 120	TPU HP®	55 Sh D	40	50		
ES-840	TS80 U HP blue 55MD <sup>5</sup>	10 x 80	TPU HP®	55 Sh D	200-250	40		
ES-841	TS100 U HP blue 55MD <sup>5</sup>	10 x 100	TPU HP®	55 Sh D	200-250	40		
ES-842	TS120 U HP blue 55MD <sup>5</sup>	10 x 120	TPU HP®	55 Sh D	200-250	40		
Code	Type	Dimensions			Material	Hardness	Thickness	Minimum diameter <sup>4</sup>
		Pitch	Width	Height				
ES-707	C-U 10/20 HP blue	24	22	20	TPU HP®	85	1.6	50
ES-708	C-U 10/30 HP blue	24	22	30	TPU HP®	85	1.6	70
ES-709	C-U 10/40 HP blue	24	22	40	TPU HP®	85	1.6	100
ES-710	C-U 10/50 HP blue	24	22	50	TPU HP®	85	1.6	120
ES-711	C-U 20/60 HP blue	50	42	60	TPU HP®	85	1.6	150
ES-712	C-U 20/80 HP blue	50	42	80	TPU HP®	85	1.6	190

<sup>4</sup> Minimum pulley diameters referred to environment conditions of 20°C.

<sup>5</sup> Available in 800 mm length bars.

## CHIORINO AFFILIATED COMPANIES

### America

CHIORINO AMERICA  
Newark, DE  
Tel. +1-302-292-1906  
info@chiorino.us  
www.chiorino.us

### Australia

CHIORINO AUSTRALIA - Brisbane  
Tel. +61-7-3274 1900  
sales@chiorino.com.au  
www.chiorino.com.au

### Benelux

CHIORINO BENELUX B.V. - Utrecht,  
The Netherlands  
Tel. +31-30-2413060  
chiorino@chiorino.nl  
www.chiorino.nl

### Byelorussia

CHIORINO-K - Minsk  
Tel. +375-17-2804578  
general@chiorino.ru  
www.chiorino.ru

### China

CHIORINO ASIA Ltd.  
Hong Kong  
Tel. +852-397-10818  
info@chiorino.asia  
www.chiorino.asia

CHIORINO LIAISON OFFICE, Shanghai  
Tel. +86-21-37831019  
info@chiorino.cn  
www.chiorino.cn

### France

CHIORINO SAS - Lagny, Paris  
Tel. +33-1-64304075  
chiorino.paris@chiorino.fr  
www.chiorino.fr

### Germany

CHIORINO GmbH - Mainz  
Tel. +49-(0)6131-55449-0  
info@chiorino.de  
www.chiorino.de

### Hungary

CHIORINO Kft. - Szigetszentmiklós,  
Budapest  
Tel. +36-24-525930  
mail@chiorino.hu  
www.chiorino.hu

### India

CHIORINO INDIA - Salcete Goa  
Tel. +918-322-782454  
info@chiorino.in  
www.chiorino.in

### Italy

CHIORINO PARMA s.r.l. - Parma  
Tel. +39-0521-292236  
chiorinoparma@chiorino.com

CHIORINO VENETO s.r.l. - Colle Umberto  
Tel. +39-0438-430460  
chiorinoveneto@chiorino.com

### Poland

CHIORINO Sp. z o.o. - Bydgoszcz  
Tel. +48-(0)52-3487708  
chiorino@chiorino.com.pl  
www.chiorino.com.pl

### Portugal

CHIORINO PORTUGAL, LDA  
Alfena Valongo, Porto  
Tel. +351-229684442  
geral@chiorino.pt  
www.chiorino.pt

### Romania

CHIORINO srl - Cluj Napoca  
Tel. +40-264-432977  
chiorino@chiorino.ro  
www.chiorino.ro

### South Africa

CHIORINO SOUTH AFRICA (PTY) LTD.  
Johannesburg  
Tel. +27-11-3971268  
sales@chiorino.co.za  
www.chiorino.com

### Spain

CHIORINO IBERICA S.A. - Rubí, Barcelona  
Tel. +34-93-5860480  
chiorino@chiorino.es  
www.chiorino.es

### Switzerland

CHIORINO SCHWEIZ GmbH - Wetzikon  
Tel. +41-(0)43-3116001  
info@chiorino.ch  
www.chiorino.ch

### United Kingdom

CHIORINO U.K. Ltd. - Featherstone  
Tel. +44-1977-691880  
sales@chiorino.co.uk  
www.chiorino.co.uk

## CHIORINO DISTRIBUTORS

Albania  
Argentina  
Armenia  
Austria  
Azerbaijan  
Bangladesh  
Belgium  
Bolivia  
Bosnia-Herzegovina  
Botswana  
Brazil  
Bulgaria  
Cambodia  
Canada  
Chile  
Colombia  
Costa Rica  
Croatia  
Cyprus  
Czech Republic  
Denmark  
Egypt  
Estland  
Fiji  
Finland  
Georgia  
Greece  
Guatemala  
Honduras  
Iceland  
Indonesia  
Iran  
Ireland  
Israel  
Ivory Coast  
Jordan  
Kazakhstan  
Kenya  
Kirgizstan  
Laos  
Latvia  
Lebanon  
Lithuania  
Macedonia  
Malawi  
Malaysia  
Mexico  
Moldova  
Morocco  
Myanmar  
New Caledonia  
New Zealand  
Nicaragua  
Pakistan  
Panama  
Papua New Guinea  
Paraguay  
Peru  
Russia  
Saudi Arabia  
Serbia  
Slovak Republic  
Slovenia  
South Korea  
Sri Lanka  
Sweden  
Tadjikistan  
Thailand  
Turkey  
Turkmenistan  
Ukraine  
United Arab Emirates  
Uzbekistan  
Vietnam  
Yemen  
Zimbabwe

## HEADQUARTERS AND PRODUCTION PLANTS

### CHIORINO S.p.A.

Via S. Agata, 9  
I-13900 Biella, Italy  
Tel. +39 015 8489 1  
Fax +39 015 849 61 61  
chiorino@chiorino.com  
www.chiorino.com

UNI EN ISO 9001:2015  
UNI EN ISO 14001:2015  
OHSAS 18001:2007  
EMAS



ENGINEERING ADVICE  
ON-SITE INSTALLATION SERVICE  
AFTER SALES SUPPORT

